



*III European Conference On Sustainable Mobility At Universities
“Towards a sustainable mobility”, 17-18 November 2021*

Municipal peer-to-peer learning for sustainable urban mobility

Partners of Connective Cities



Commissioned by



Federal Ministry
for Economic Cooperation
and Development

PROJECT OBJECTIVES



To facilitate worldwide **networking** between urban actors from politics, administration, business, science and civil society

To support a systematic and practice-oriented **exchange** of experiences based on good practices but also on local challenges **through peer-to-peer consultations and joint learning**



To support the development of innovative **ideas for urban projects**



URBAN MOBILITY: a thematic focus



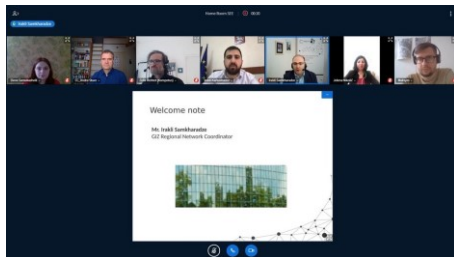
Cebu / Philippines © Connective Cities

Asia



Trujillo / Peru © Connective Cities

Latin
America



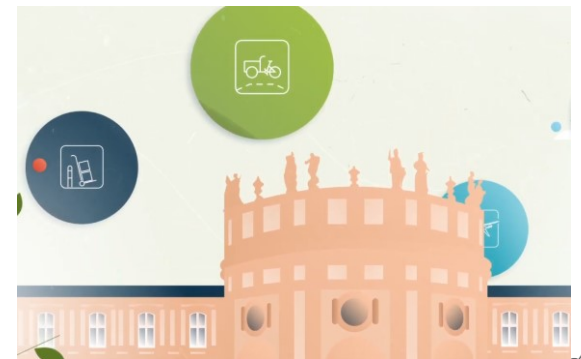
Virtual Exchange © Connective Cities

Southeast Europe
& Caucasus



© City of Bremen

Global



Video of City of Wiesbaden
© Connective Cities

OUR LEARNING METHODOLOGY



Good practices

Starting exchange based on practical local examples



Peer exchange

Continue by working on individual challenges
Use available expertise



Action planning

Finally jointly develop project ideas
Use available expertise

EXAMPLE OF A SUCCESSFUL LEARNING PROCESS

Set up of 30km/h zones
in Belo Horizonte, Brazil



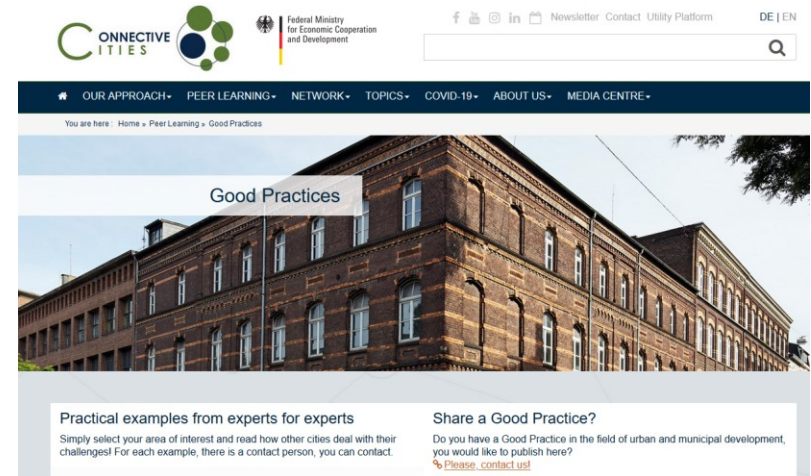
OUR TOOLS



Expert missions

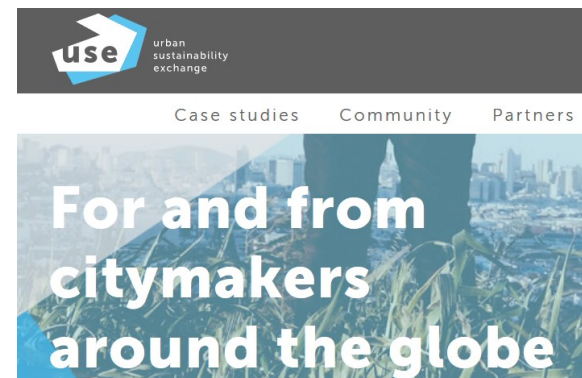


Sharing good practices



also in cooperation with partners

Virtual exchange



PEER-TO-PEER LEARNING

Covid-19 and urban mobility (July 2021)

CONNECTIVE CITIES VIRTUAL DIALOGUE EVENT




Kathe Buttner
@fromdusttilldrawn

- ➔ SUSTAINABLE URBAN LOGISTICS 
- ➔ LOCAL PUBLIC TRANSPORT 
- ➔ BICYCLE TRAFFIC and INFRASTRUCTURE 

In cooperation with:



PEER-LEARNING NOTE



#29

**Sustainable
Urban Mobility
& COVID-19**

Peer Learning
Wiesbaden (online), July 2021

CONNECTIVE
ITIES

Learning
UCLG

Partners

UCLG
United Cities
and Local Governments

Learning
UCLG

CONNECTIVE
ITIES

<https://learning.uclg.org/peer-learning/>

29
Sustainable Urban Mobility & COVID-19

BIKEHUBS - Innovative flexible parking facilities

The city of **Lindau (Germany)** has seen an increase in bike use not only from its residents but also as a destination for bike tourism as it lies along Lake Constance, home to one of Europe's most popular cycle paths. Together with the creation of 'bicycle boulevards' - restricted access roads with low-speed limits to prioritize bicycles -, the city has created new parking facilities following increased usage during the pandemic

As part of these efforts, the city also developed BIKEHUBS, a portable parking facility in a modular container, which can be moved as necessary providing extra bicycle parking facilities for events, or during summer periods of high demand.





Thank you very much for your attention!

*Get connected on **www.connective-cities.net/en***

Partners of Connective Cities



with its



Commissioned by



Federal Ministry
for Economic Cooperation
and Development