



Nordic Sustainable Campus Network

**Kristina von Oelreich, Sustainability Manager at KTH
(Royal Institute of Technology) and group leader NSCN
2021-11-18**



Nordic Sustainable Campus Network

Target group

Nordic universities' staff members that is working with education and research and administration.

Sustainability /environmental / directors, managers and coordinators also staff working with education and research.



Stakeholders- needs and expectation

Local
communities

Government

Citizens

Staff and
students

Companies

Public authorities

Doners,
Financier

Leadership and sustainable development

Education and research can and should contribute to better living conditions and to an **ecologically, socially** and **economically** sustainable development.

Universities has a special responsibility for developing and communicating the knowledge needed to promote such sustainable development.





Working for a sustainable future every day

- The faculty and the administration needs to work closely together to promote sustainable development.
- Integrate sustainable development into the universities daily operations.
- Encourage commitment and efforts in daily operations.
- Communicate the good examples every day.





Key areas- Nordic Sustainable Campus Network

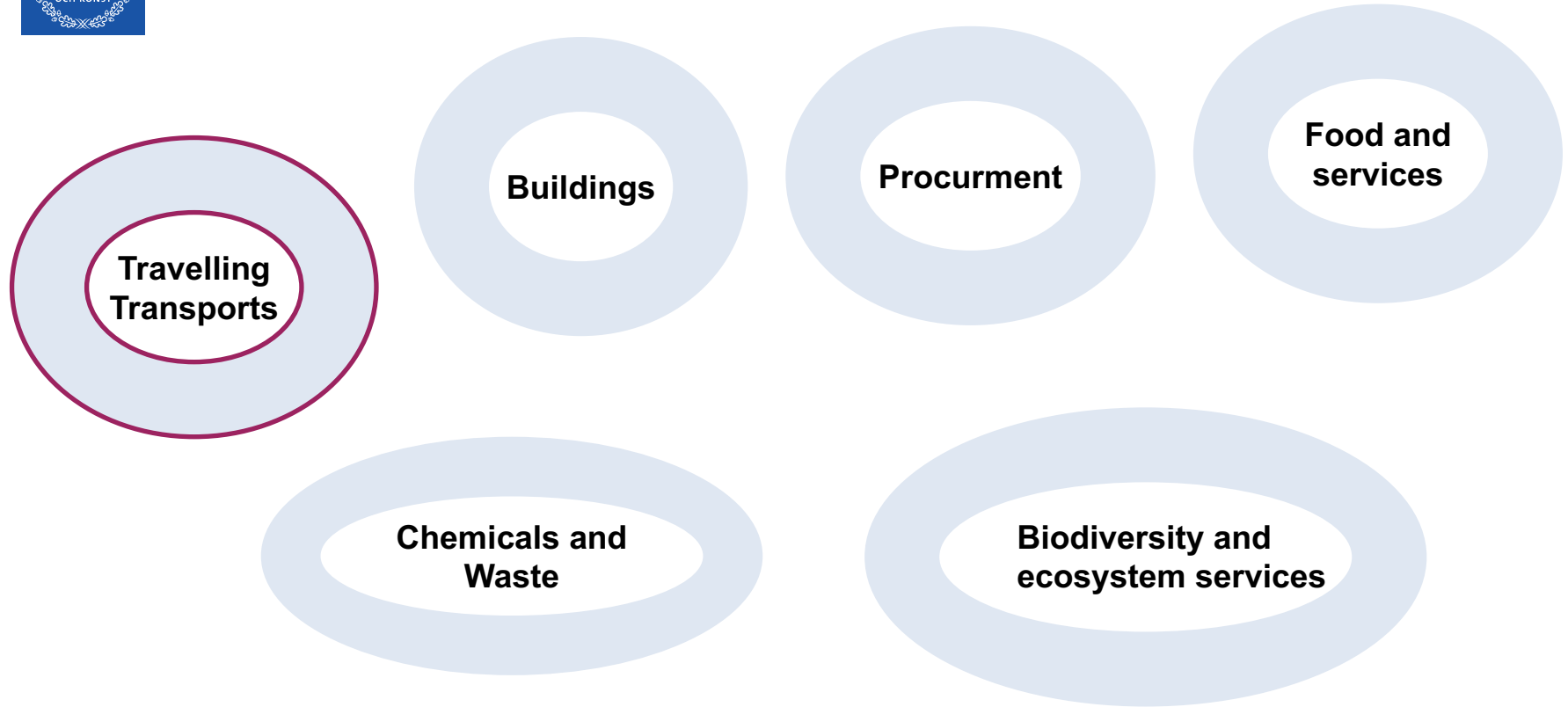
Education

Research

Collaboration

Outreach

Key areas- Nordic Sustainable Campus Network



Focus areas

Projects 2021- 2022

- Sharing experience with carbon accounting and climate footprint among Nordic higher education institutions.
- Establish a climate/environment framework among Nordic higher education institutions.
- Reducing carbon emissions from travelling – Challenges and possibilities after Corona.



Towards a sustainable mobility

Bikes

Sub way

Electric bikes

Walking

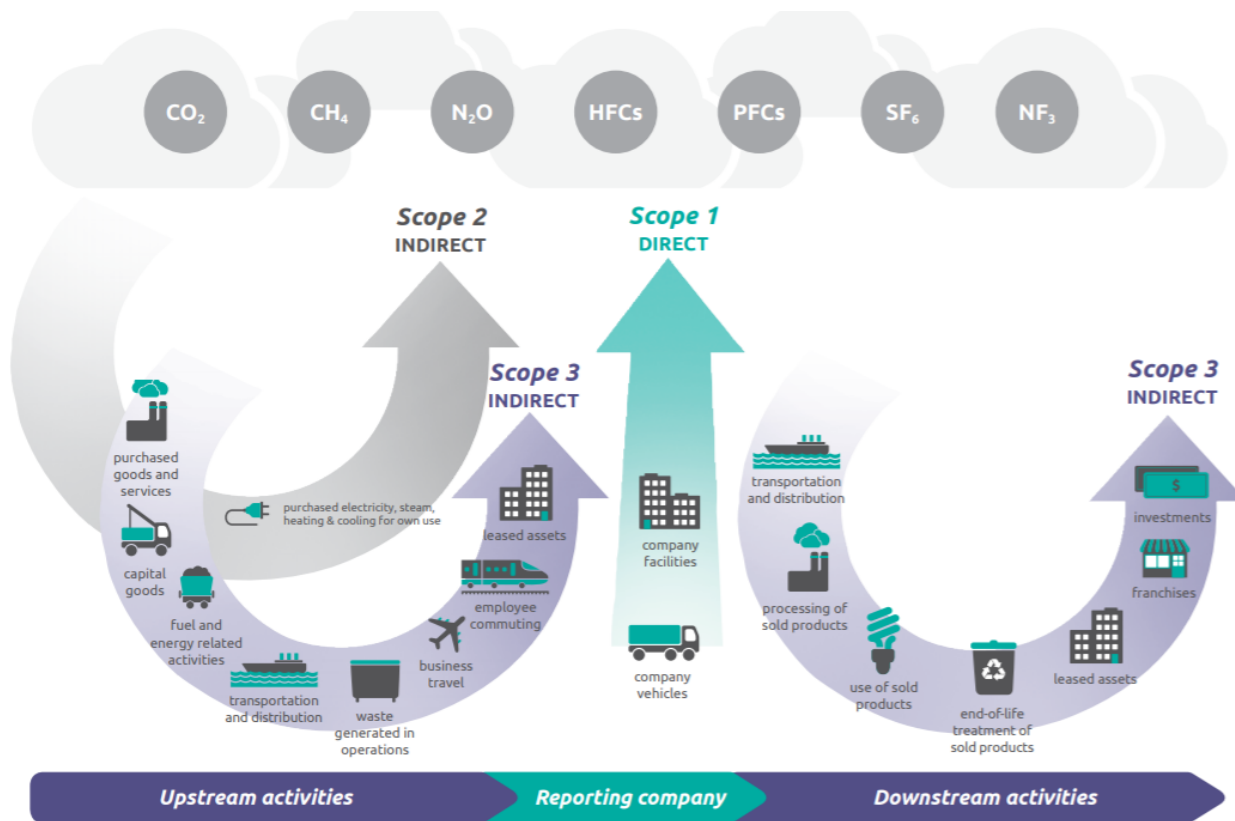
Cars pools

Projekt with staff,
researchers
and students

Electric buses

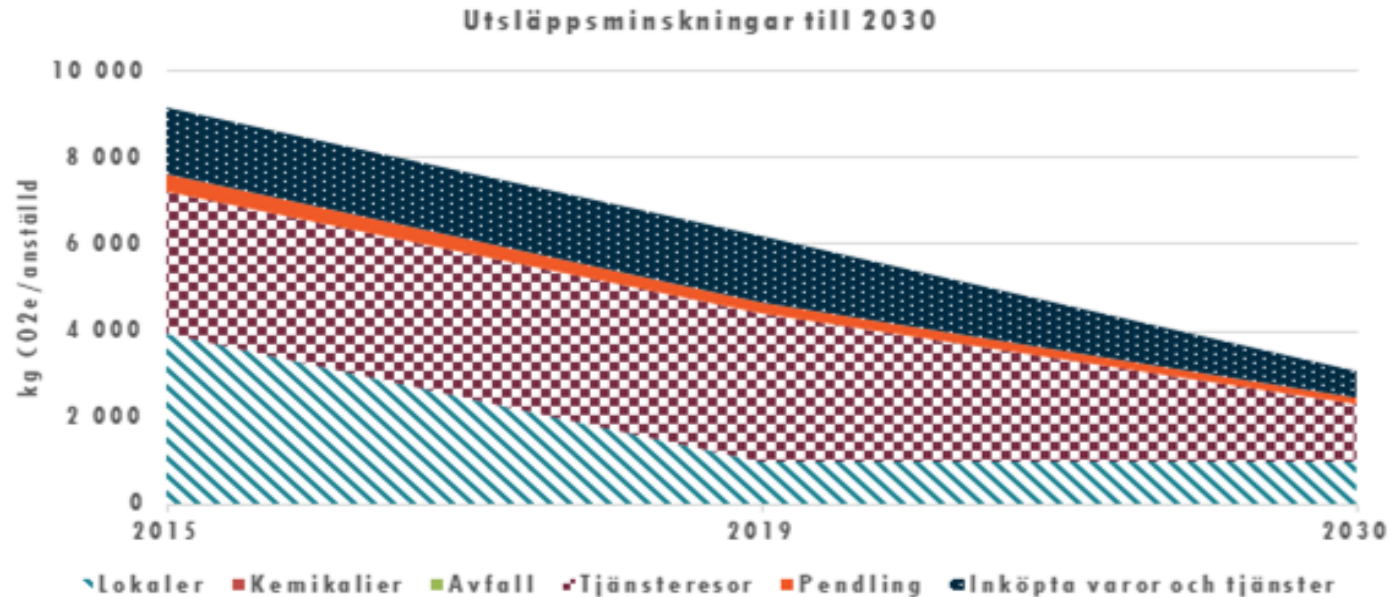
Electric cars

GHG Protocol Scopes and categories



Identify and quantify reduction activities (Roadmap to target fulfillment)

5



*Not real numbers, just an illustration



Conclusions

- Sustainability work is not a project – it will be integrated in the universities core operations.
- Strong leadership, engagement, and commitment and involving of the staff and relevant stakeholders its important.
- Important to communicate performance and impact .
- We all have the responsibility to contribute in the daily activities.
- We are a world citizen and need to also act from there.
- Important with a systematic environmental work according to ISO 14001



Thanks for your attention!

